



Few things in life excite the senses like a beautiful city skyline. The lights glistening off tall skyscrapers is just one indicator of a vibrant, urban city center. Kingston On West delivers the best in luxury townhome living in the heart of historic Wilmore. With a variety of floor plans and custom finishes to choose from, you're bound to find the perfect home for you and your family. These beautiful, luxurious townhomes are the perfect address for those wanting all that Charlotte has to offer. Close to light rail, lush urban parks, world-class theater, sports, entertainment, fine dining, and more. All within a short distance. Come see why Kingston On West is destined to become the premier luxury townhome community in Charlotte.



INTERIOR DESIGN FEATURES

- Sleek architectural style featuring modern interior design
- Open-concept floor plans
- Handscraped 4" hardwood floors
- Expansive windows for ideal natural light
- 9' ceilings on the main level and 9' ceilings on the upper level
- 2 Smart home iPad wall mounts
- Polished quartz countertops with modern rectangular undermount sinks in all bathrooms
- Porcelain tile surround and floor in master bath shower with frameless shower door
- 12" x 24" porcelain tile bathroom flooring in all bathrooms
- CAT5 and cable in all bedrooms and living room
- Delta designer faucets
- Contemporary metal railing on main living floor
- Custom interior lighting allowance



KITCHEN FEATURES

- Modern full overlay cabinets with soft-close and full extension slides
- Contemporary cabinet hardware
- Expansive eat-in kitchen island
- 3cm quartz countertops
- Marble tile backsplash
- Single-bowl undermount stainless sink
- Stainless-steel appliances including Kitchen-Aid/Bertazonni range with gas burners, range hood, dishwasher, and built-in microwave drawer
- Delta kitchen faucet
- Spacious pantry
- LED recessed lighting

EXTERIOR FEATURES

- Full brick exterior elevations
- Custom Arriscraft stone
- Hardcoat Stucco
- Wooden garage doors with automatic garage door openers
- Walkout rear deck
- Front covered entry
- Terraces on select end units
- Patios on select end units

SMART HOME FEATURES



Nest Thermostat

Control your home's temperature while you're away and save money on energy



Ring Doorbell

Video doorbell provides HD clear images of who's at your door, even with night vision



iPad SmartHome System

Control every aspect of your home including audio, messaging, lighting, etc. from your iPad SmartHome System.





WEST BOULEVARD

37 38 39 40 41 42

33 34 35 36

24 25 26 27 28

14 15 16 17 18

29 30 31 32

19 20 21 22 23

9 10 11 12 13

1 2 3 4

5 6 7 8

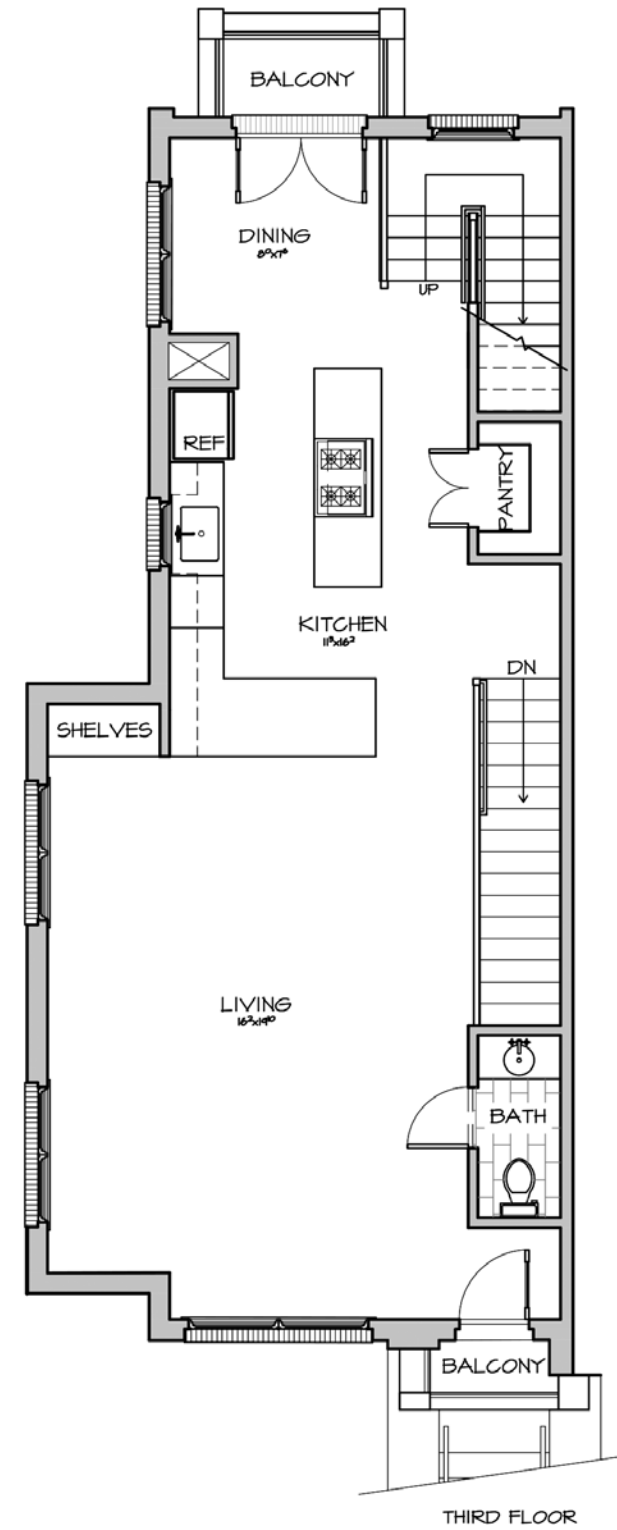
9 23

9

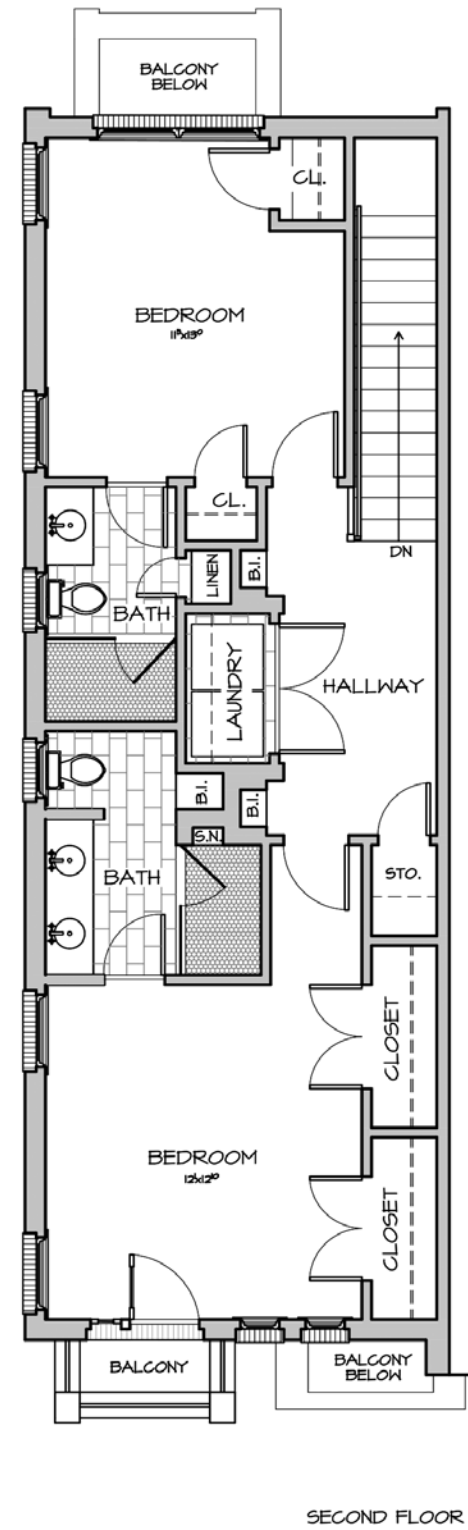
W-3

W-3

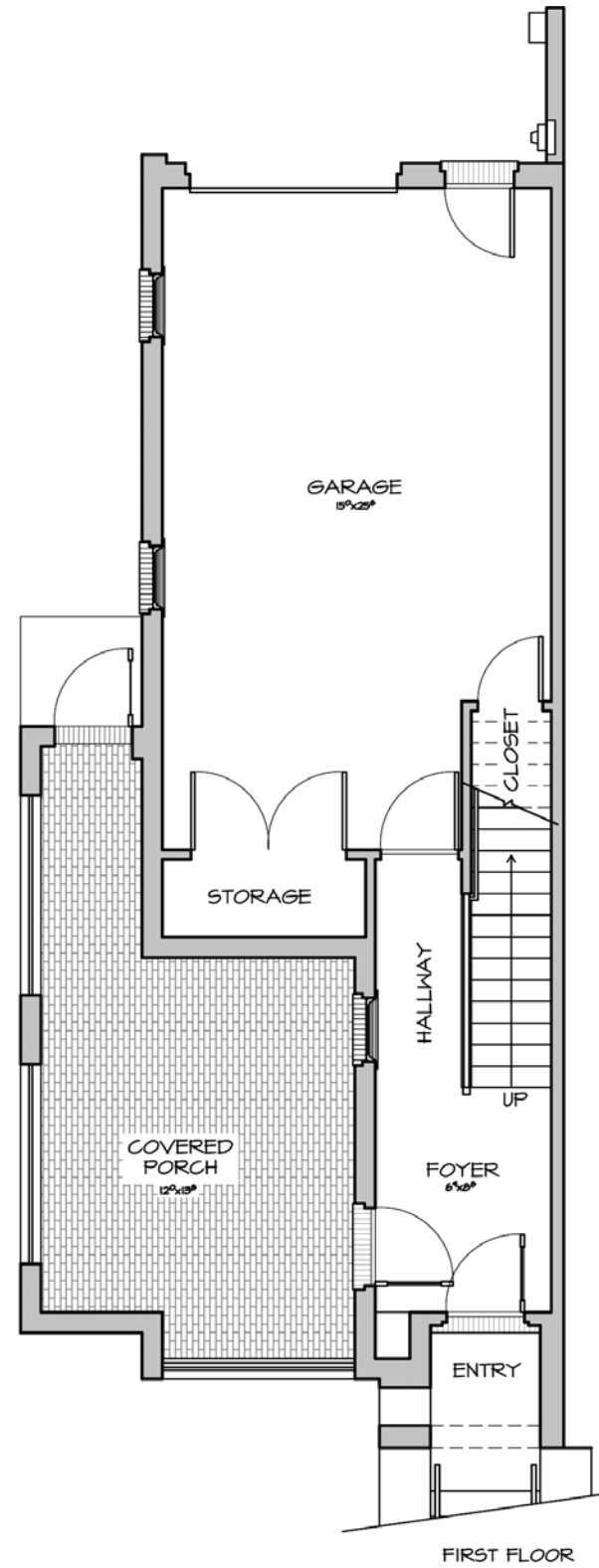
WEST BLVD. END UNIT
HEATED SQ. FT. 1,800 / UNHEATED SQ. FT. 647



THIRD FLOOR



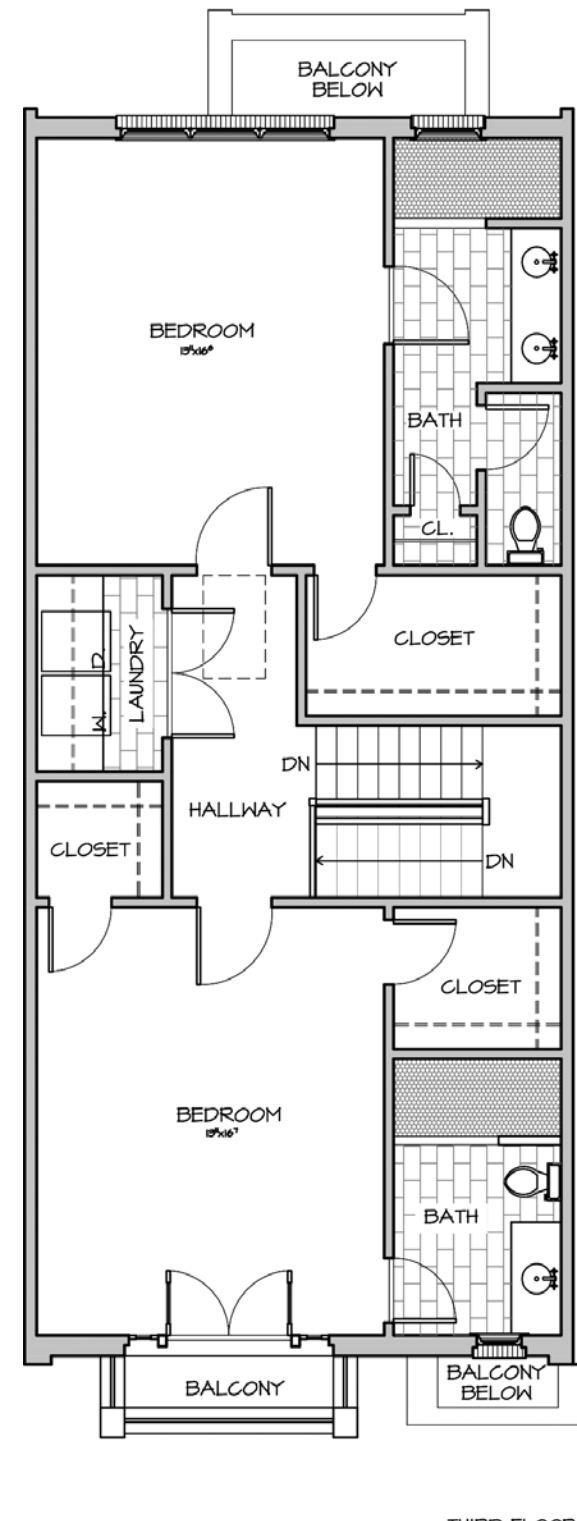
SECOND FLOOR



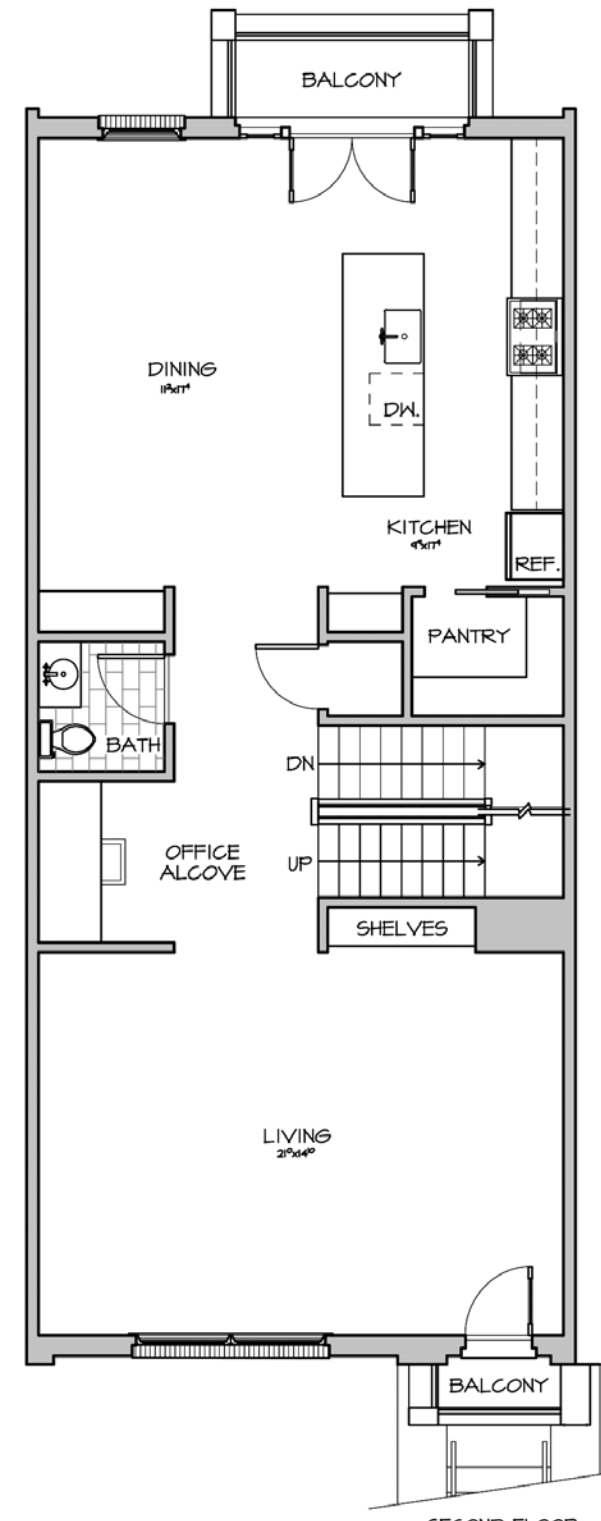
FIRST FLOOR

WEST BLVD END UNIT
HEATED: 1,691 SQ. FT.
UNHEATED: 647 SQ. FT.

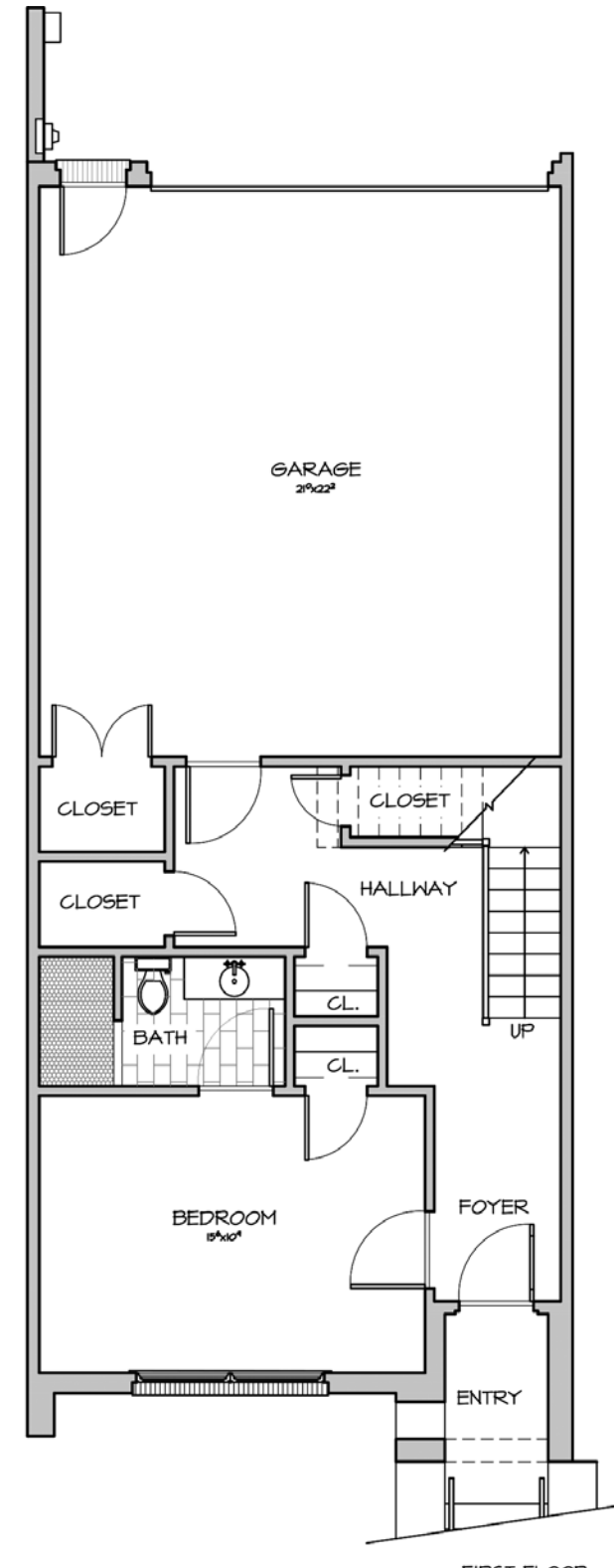
AREAS MEASURED TO INSIDE F.O. EXTERIOR WALLS AND CENTERLINE OF DEMISING WALLS. COVERED PORCHES, ENTRIES, & BALCONIES MEASURED TO INSIDE F.O. ENCLOSURE



THIRD FLOOR



SECOND FLOOR



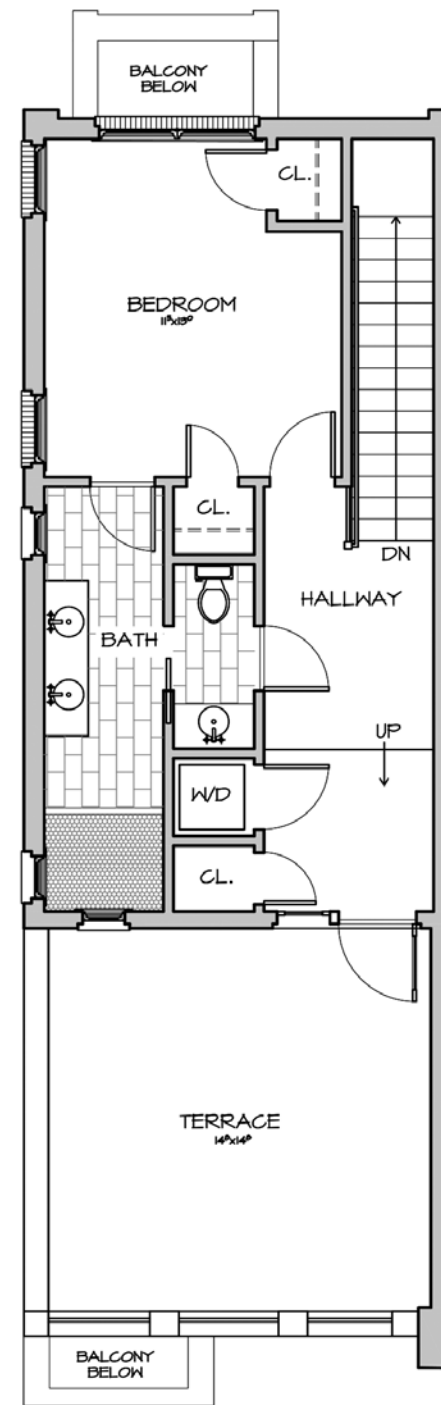
FIRST FLOOR

Figures reflecting size, square footage, and other dimensions are estimates; actual construction may vary. Size/square footage and price of your home may vary based on options selected. Floor plans may vary according to elevation. Prices, plans, dimensions. Features, specifications, materials and availability of homes or communities are subject to change without notice or obligation. Please contact us to verify current information. They may differ from completed improvements and may change without notice.

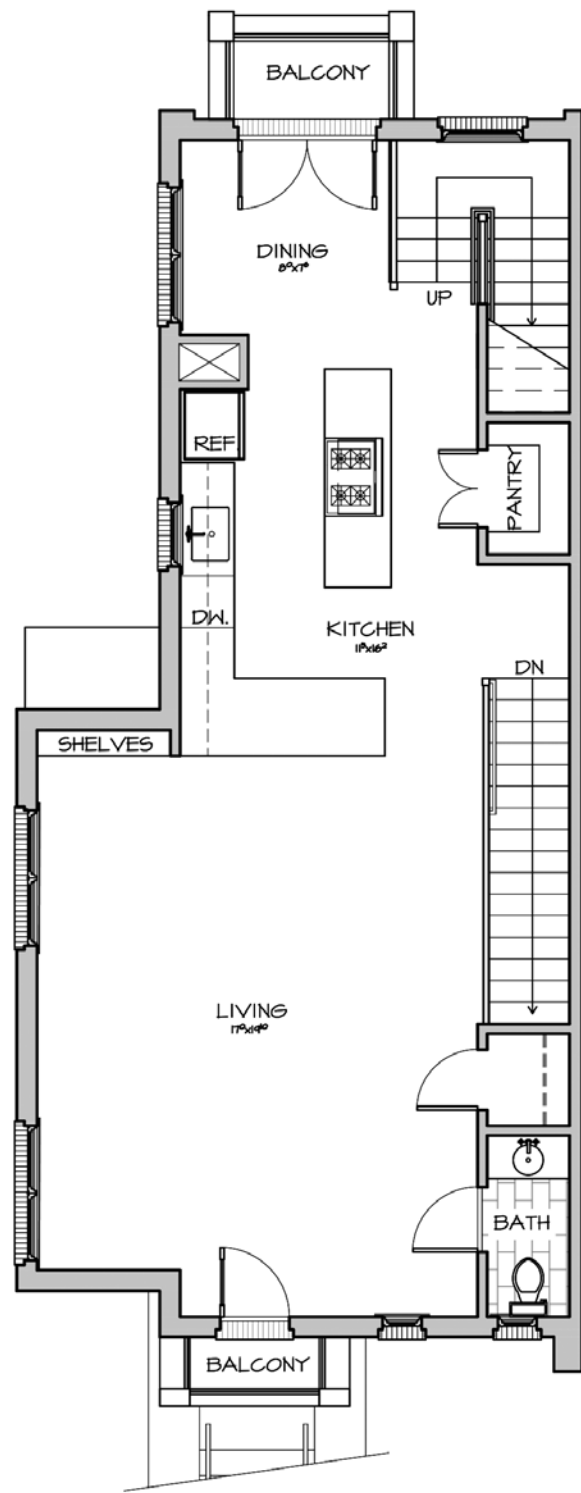
WEST BLVD. INTERIOR UNIT
HEATED SQ. FT. 2,559 / UNHEATED SQ. FT. 534

WEST WORTHINGTON END UNIT #1

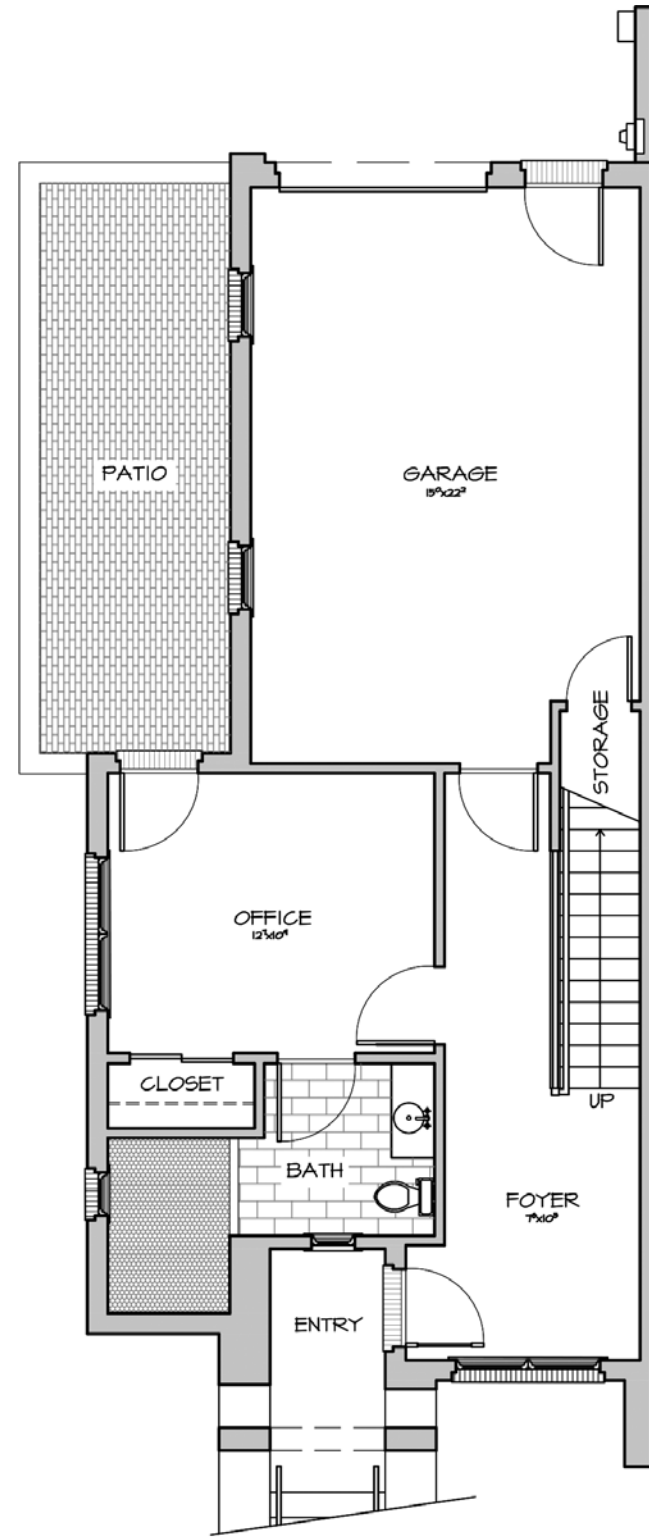
HEATED SQ. FT. 1,874 / UNHEATED SQ. FT. 595



THIRD FLOOR



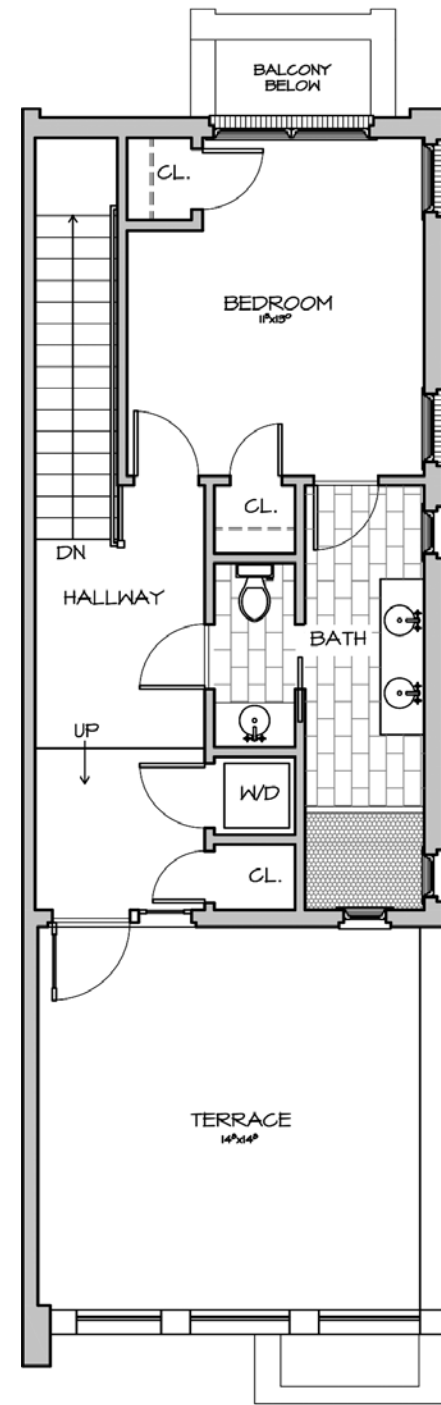
SECOND FLOOR



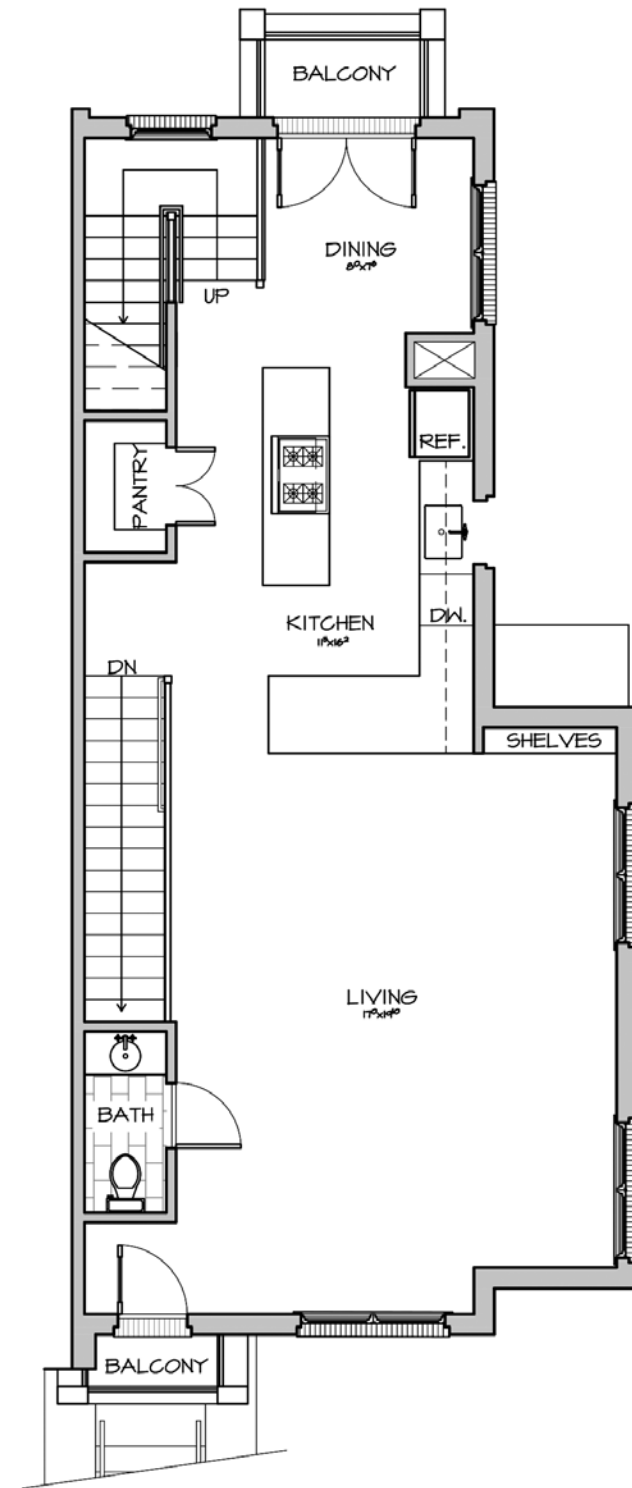
FIRST FLOOR

WEST WORTHINGTON END UNIT #1

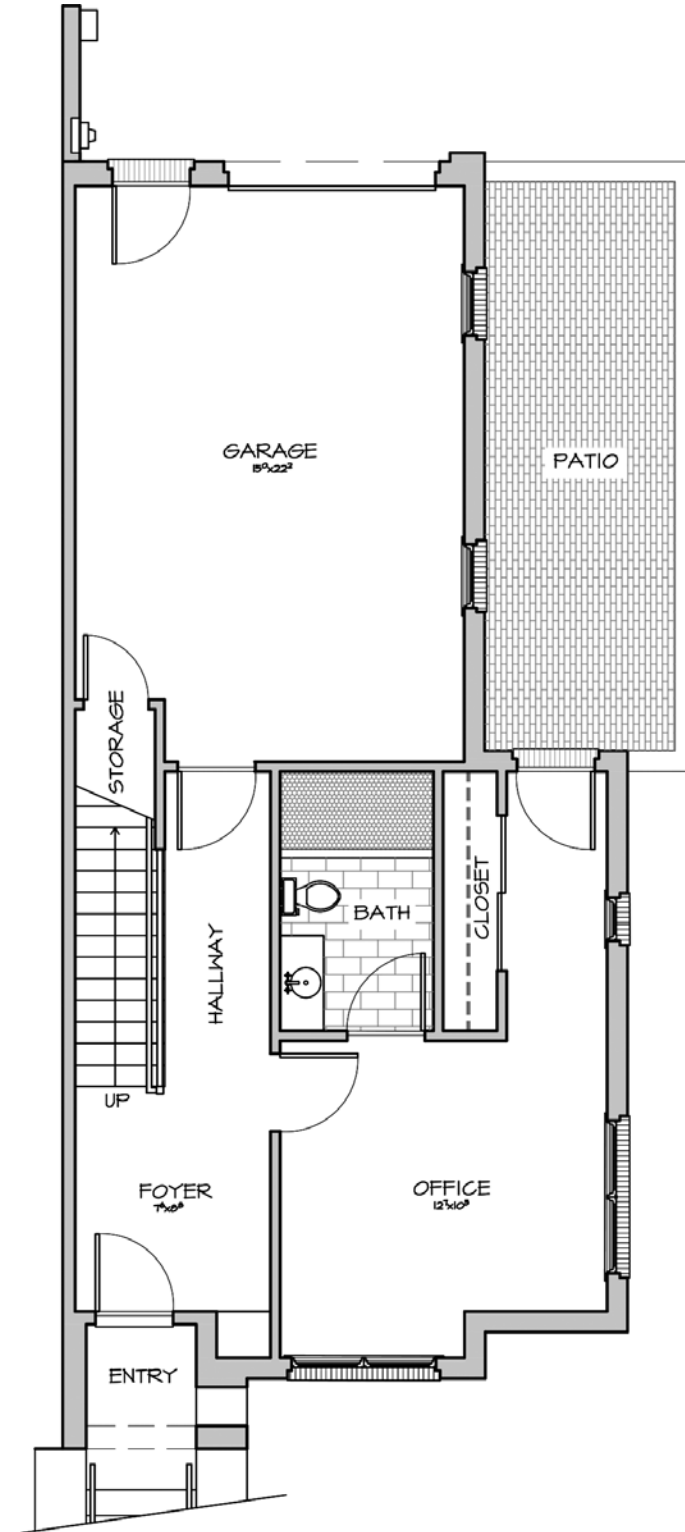
HEATED: 1,728.2 SQ. FT.
UNHEATED: 622.7 SQ. FT.



THIRD FLOOR



SECOND FLOOR



FIRST FLOOR

WEST WORTHINGTON END UNIT #2

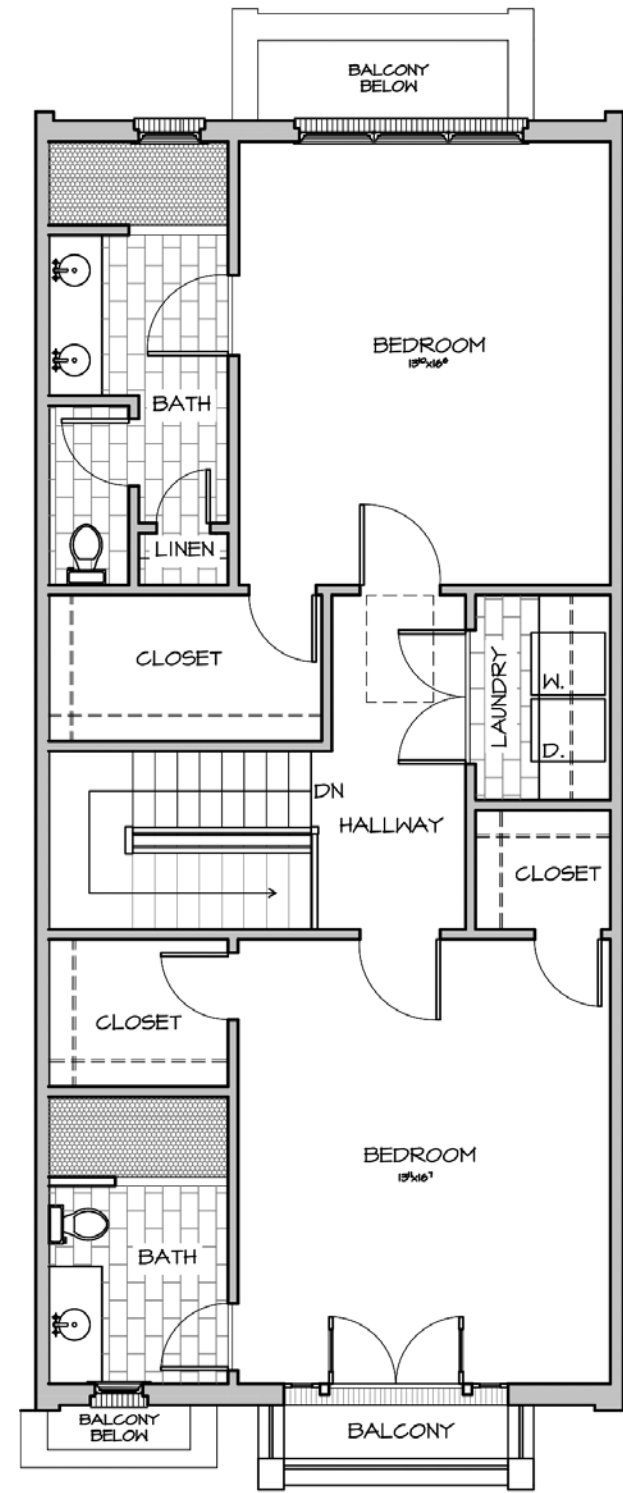
HEATED SQ. FT. 1,906 / UNHEATED 612

AREAS MEASURED TO INSIDE F.O. EXTERIOR WALLS AND CENTERLINE OF DEMISING WALLS. COVERED PORCHES, ENTRIES, & BALCONIES MEASURED TO INSIDE F.O. ENCLOSURE

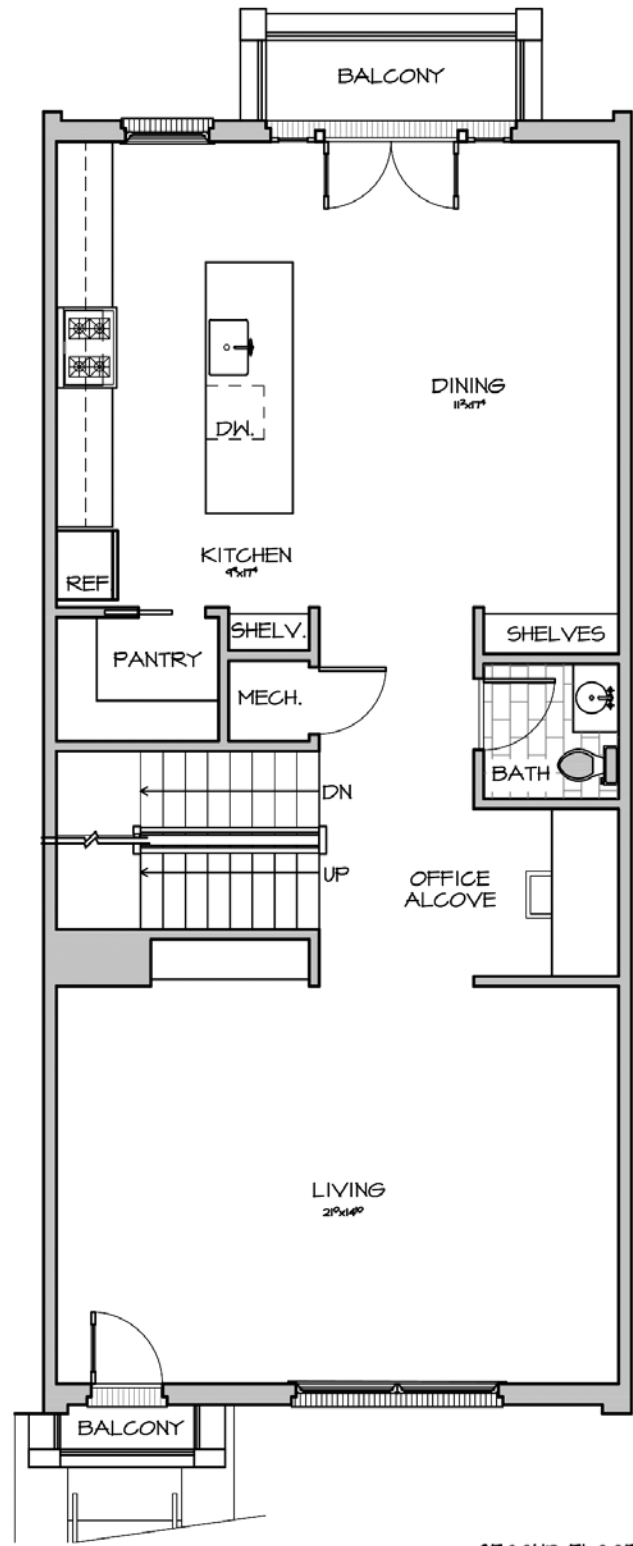
Figures reflecting size, square footage, and other dimensions are estimates; actual construction may vary. Size/square footage and price of your home may vary based on options selected. Floor plans may vary according to elevation. Prices, plans, dimensions. Features, specifications, materials and availability of homes or communities are subject to change without notice or obligation. Please contact us to verify current information. They may differ from completed improvements and may change without notice.

WEST WORTHINGTON INTERIOR UNIT #1

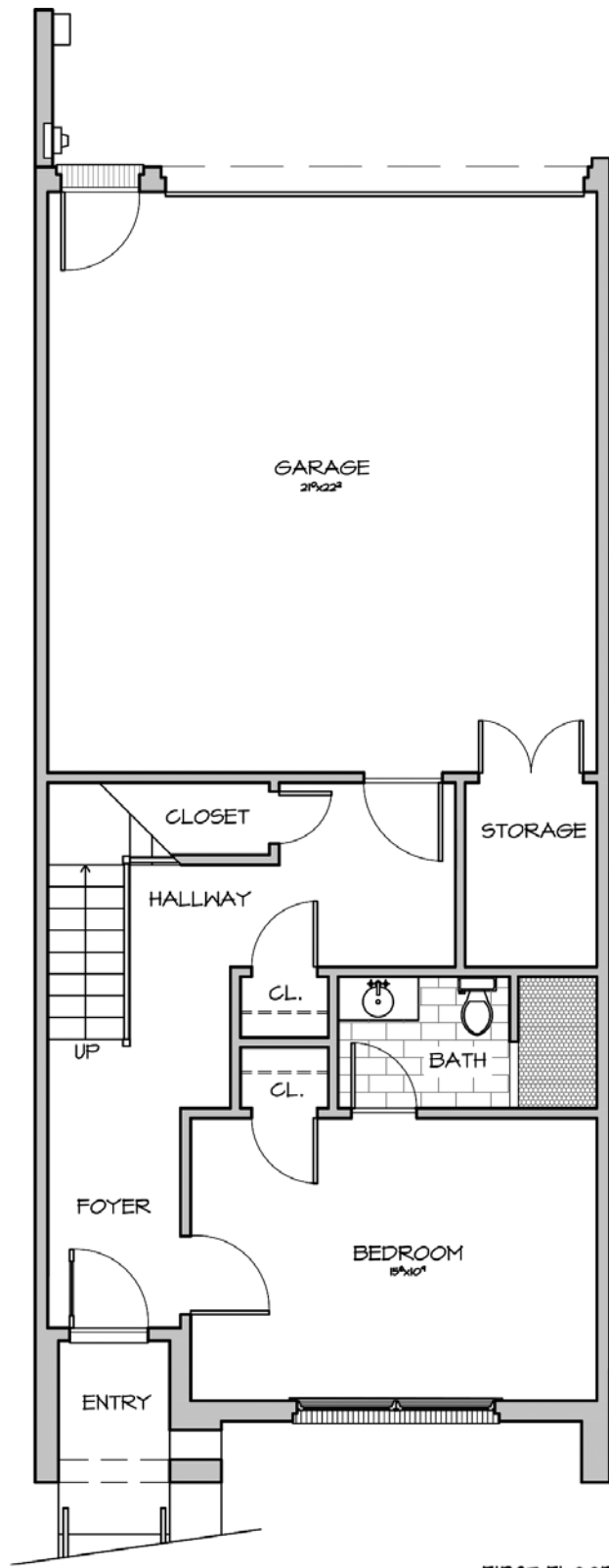
HEATED SQ. FT. 2,559 / UNHEATED SQ. FT. 534



THIRD FLOOR



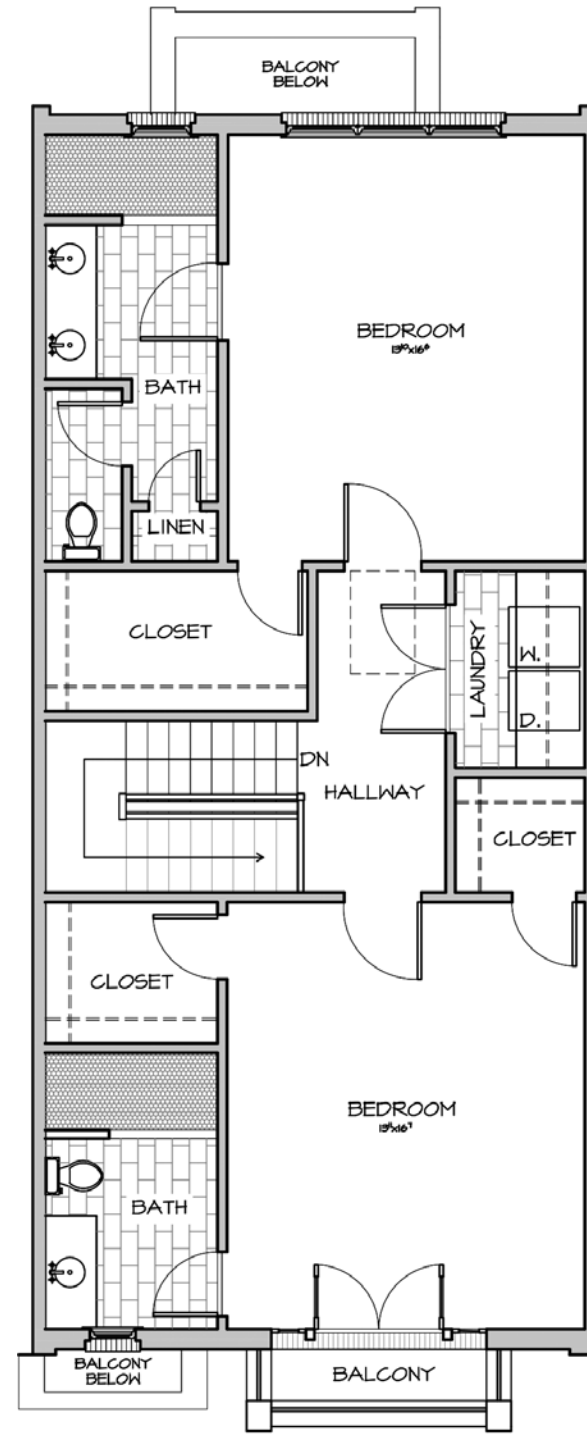
SECOND FLOOR



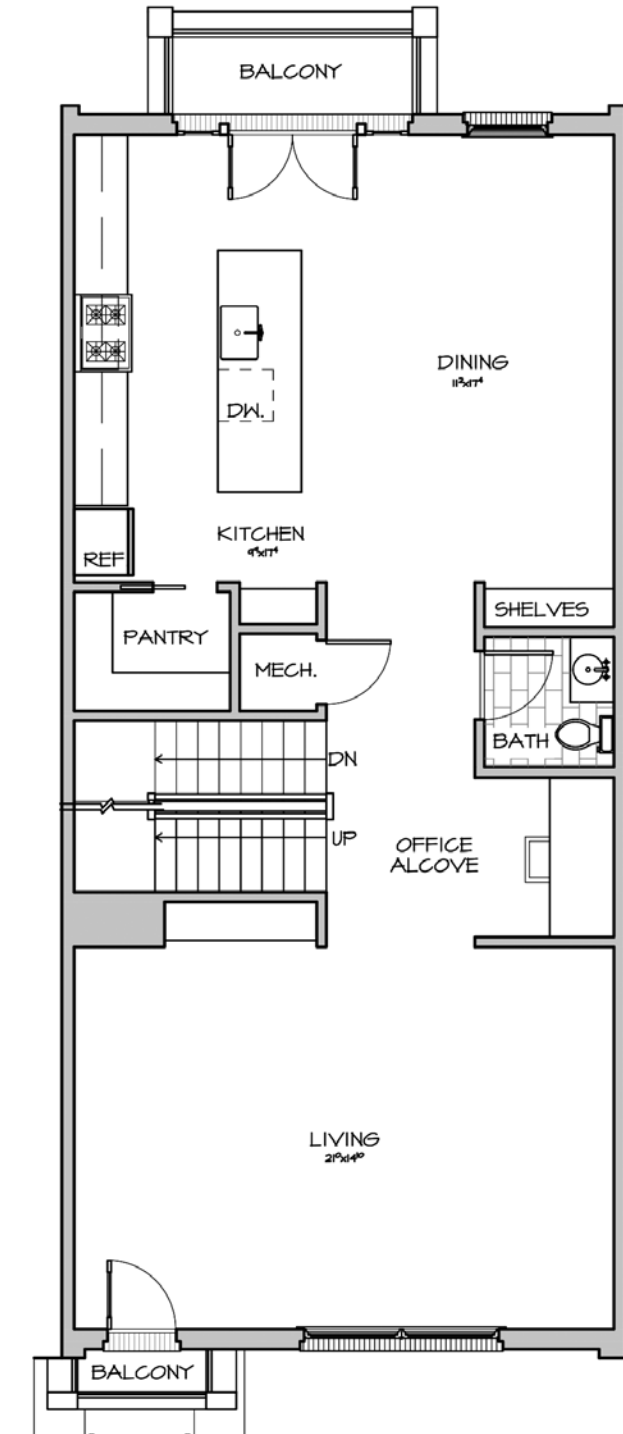
FIRST FLOOR

AREAS MEASURED TO INSIDE F.O. EXTERIOR WALLS AND CENTERLINE OF DEMISING WALLS. COVERED PORCHES, ENTRIES, & BALCONIES MEASURED TO INSIDE F.O. ENCLOSURE

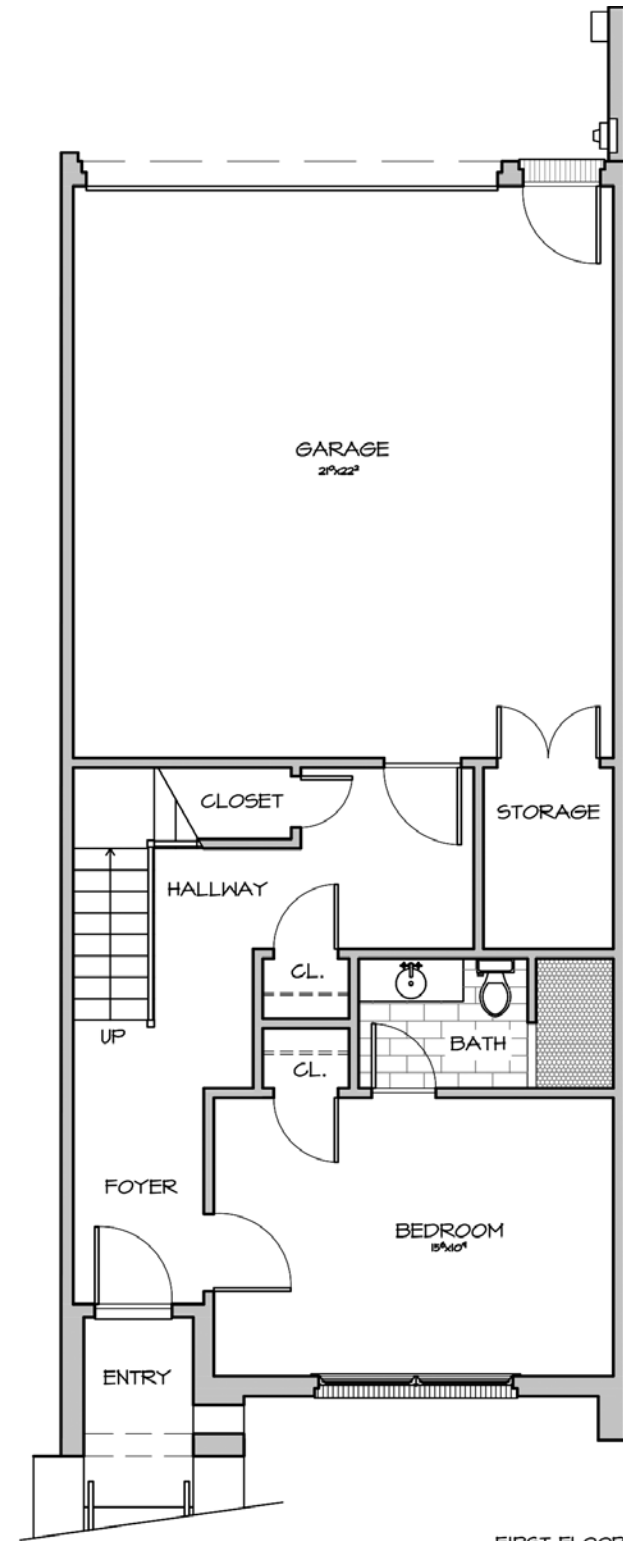
WEST WORTHINGTON INTERIOR UNIT #1
HEATED: 2,549 SQ. FT.
UNHEATED: 569 SQ. FT.



THIRD FLOOR



SECOND FLOOR



FIRST FLOOR

Figures reflecting size, square footage, and other dimensions are estimates; actual construction may vary. Size/square footage and price of your home may vary based on options selected. Floor plans may vary according to elevation. Prices, plans, dimensions. Features, specifications, materials and availability of homes or communities are subject to change without notice or obligation. Please contact us to verify current information. They may differ from completed improvements and may change without notice.

WEST WORTHINGTON INTERIOR UNIT #2

HEATED SQ. FT. 2,559 / UNHEATED SQ. FT. 534



AREA ATTRACTIONS



shopping

- Atherton Mill
- Anthropologie
- Pink Social
- Madwell
- Uniquities
- Lululemon
- Free People
- Warby Parker



eat

- Superica
- Hawkers
- O-Ku
- Indaco
- Futo Buta
- Blacow-Southend
- 300 East
- Rai Lay Thai
- Flower Child
- The Manchester
- The Waterman Fish Bar
- Living Kitchen
- Bonterra Restaurant & Wine Room
- Big Ben Pub
- Shake Shack



drinks

- Sycamore Brewing
- Wooden Robot Brewery
- The Unknown Brewing Co
- Lenny Boy Brewing
- Tyber Creek Pub
- Gin Mill South End
- The Wine Loft
- The Union
- Clean Juice



nearby attractions

- Bank of America Stadium
- Revolution Park Golf Course
- Wilmore Centennial Park
- Charlotte Trolley Power House Museum

